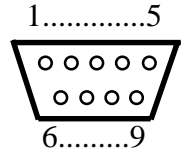


9 pin "D" RS232



Note: If the **SLAVE/Master jumper** is installed on the **SPI** board then **JP1** needs to be installed on the **RS232** board. This puts RS232 in Master Mode and SPI in SLAVE.
For calibration & diagnostic testing, leave jumpers out.

Press **RESET** switch on the RS232 board after pressing the **RESET** switch on the **SPI** sensor board.

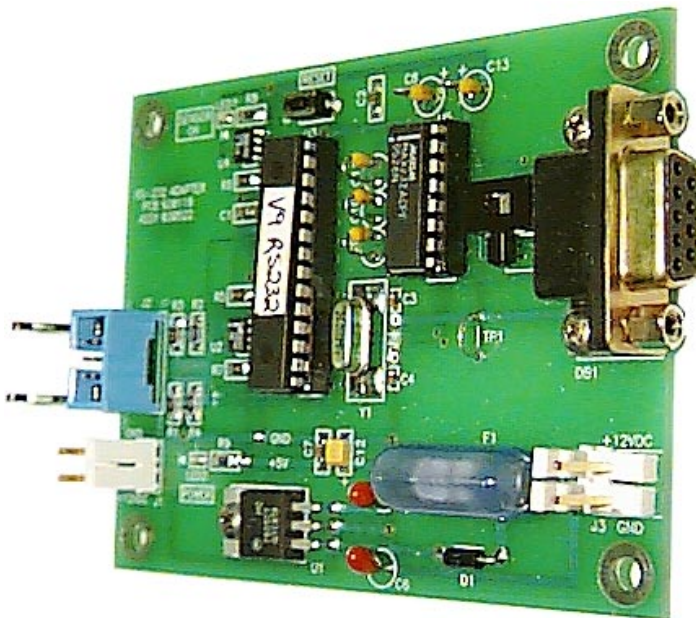
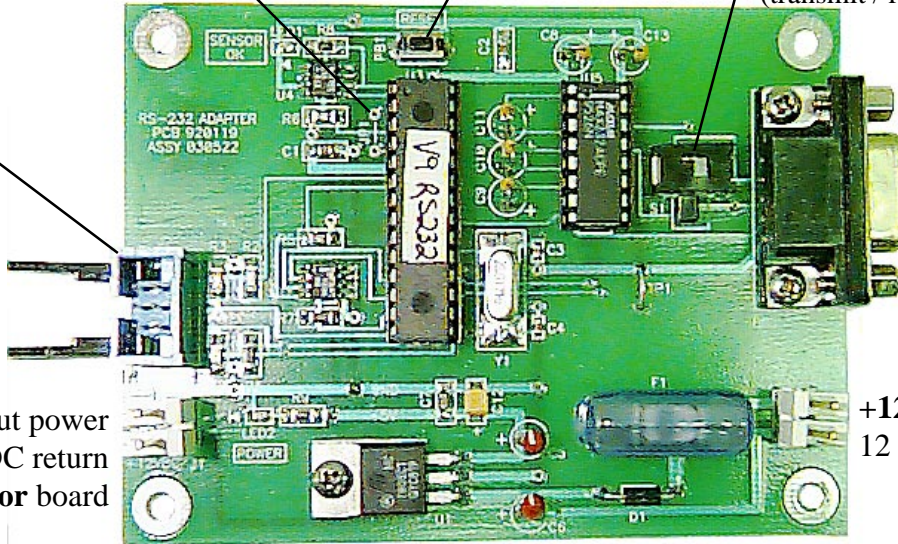
null modem switch allows you to reverse pins 2 & 3 (transmit / receive pins)

SPI conn. to sensor board. See product spec sheet & **Application Note A59**

9 pin "D" female RS232 conn.
 pin 2 - transmit
 pin 3 - receive
 pin 5 - digital ground

+12 VDC input power
 12 VDC return to **SPI** sensor board

+12 VDC input power
 12 VDC return (-)



Any terminal emulation program in DOS like **PCPLUS** or **HyperTerminal** in Windows or in Windows click on "START", click on "Run..", and type "**Terminal.exe**" to communicate over COM Port 1 or 2 using 9600 baud, no parity, 8 bits, 1 stop bit. Switch the null modem switch if Receive / Transmit pins are reversed in the serial cable you are using to connect to the COM Port. If you are communicating with the RS232 board you will get "**LOCKED**" as a message when you press the RESET switch.

Type in capital letters "**VTI**" and you will get "**UNLOCKED**". Type "1" and you will get continuous % gas readings. See **page 2 & Application Note A59** for all commands and responses.

RS232 Test Board Terminal Emulation Interfaces

For test and troubleshooting you may connect an RS232 test board to the SPI connector as shown on page 1 and the RS232 9 pin D connector (DB9) to your computer's **COM port**. A terminal emulation program (VT100 or VT220 type dumb terminal) **HyperTerminal** program that comes with Windows or a program like **PCPLUS** in DOS may be used to talk to the RS232 Test Board. If you have properly configured your terminal program and connected the correct COM port to the RS232 connector you should get a response on your screen of "**LOCKED**" when you press the RESET switch on the RS232 Test Board. Type VTI and it will unlock. This will allow you to type the commands listed below:

Command	Action
1	DD.DD % gas Continuous
1	Toggles all calculated values: --- Measurements --- first "1" scrolls % gas 0.00 % gas data, the next "1" gives 3.8818 volts pp measurement table to right, 27.45 Deg C next "1" goes back to scroll) 0.0010 Atten 20.0 RANGE 0.000 0-1 V out 3.8855 VZ TC'd 1.9708 VSTC'd

Note: All values are stored on EEPROM so they are not lost during power failures.

Command	Action
VTI	Unlocks , time out 5 min
CX DDD.DDDD	Enter Curve Coefficient X =0-7 & value D
STC D.DDDDD	Enter Span Temperature Coefficient D
ZTC D.DDDDD	Enter Zero Temperature Coefficient D
STAR DDD.DD	Enter Span Target value D
VS D.DDDD	Enter Span voltage D (measured by SPAN)
VZ D.DDDD	Enter Zero voltage D (measured by ZERO)
SETZ	Perform auto ZERO & store VZ & TZ
SETS	Perform auto SPAN to STAR & store VS & TS
OFF RR.RRRR	Enter new RANGE value (defines 0-1V out)
FILTER D	Enter new filter value D 1-10 lamp cycles ave
D CCCCCCCC	Enter serial # (9 alphanumeric characters)
RT	RESETS the RS232 Test Board
RS	RESETS the SPI board

2	Displays all calibration data ----- Cal ----- VZ 3.8801 Volts (ZERO) VS 1.9683 Volts (full scale) TZ 28.43 Deg C (zero cal temp) TS 28.43 Deg C (span cal temp) ZTC -0.005486 V/degC (ZERO gas temperature coefficient) STC 0.002904 V/degC (STAR SPAN gas temperature coefficient) STAR 5.0 % gas (target calibration gas) OFF 20.0000 Volts (no longer used as of Apr 2002 shows RANGE)
----------	---

3 Displays all **response curve coefficients:**

```

----- Curve -----
CO 0.000000
C1 8.438299
C2 33.528999
C3 66.509003
C4 16.270000
C5 -24.007000
C6 0.000000 (if coefficient is "0" the term will drop out.
C7 0.000000 Hence this is an example of a 5th order.)
    
```

Command	Action
5	Change 2%Gas reading & STAR values to 4 decimal places in SLAVE mode only. Press RESET or type RT to reset back to two decimal places. Pertains to 2005 and 2015SPI-1 2% units only.

4 Display **Version, Serial Number, and Filter averaging time**

```

----- Sys Info -----
UNV.17 RS232 Rev (read from e-prom)
20.34 SPI Rev (read from e-prom)
DATE 02040243 (factory calibration date & serial number: April 2002 # 243 )
Filter 15 Secs (variable 1 to 15 seconds, factory set at 15 seconds )
    
```


RS-232 Test Board shown with a Model 2015SPI-4 100% CH₄ methane monitor or any 2005SPI-XX (remote diffusion gas cell) or 2015SPI-XX (on board flow through gas cell).

Press RESET switch on the RS232 board after pressing the RESET switch on the SPI sensor board.

If you are communicating with the RS232 board you will get "LOCKED" as a message using HyperTerminal on your PC. It will take a couple minutes for the sensor board to stabilize after the RESET switch is pressed.

Type "VTI" to unlock and you will be able to send commands listed on page 2. Type "1" and you will get continuous % gas readings. Type "1" again and you will get a snap shot of the % gas response followed by the peak to peak voltage out of the preamplifier, the temperature of the detector in °C, the fractional attenuation of this peak to peak signal as compared to VZ (stored ZERO gas response), the RANGE (defines 0-1V full scale), the 0-1 V output for that % gas reading, the temperature compensated ZERO gas response, and the temperature compensated full scale response (VS) in volts peak to peak. Type "2" and you will get all the stored calibration data for this serial #. Type "3" and you will get the polynomial curve coefficients that give this serial # its linear response. Type "4" and you will get the Version of the Test Board firmware followed by the Version of the sensor board, the serial#, and the (Filter) signal averaging time of 15 seconds. A print out of all of this calibration data is shipped with each serial numbered sensor. This data is stored in the EEPROM on the board.

